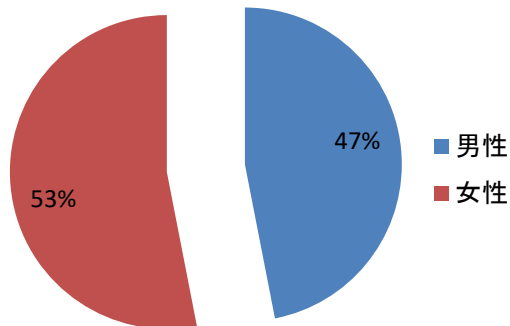
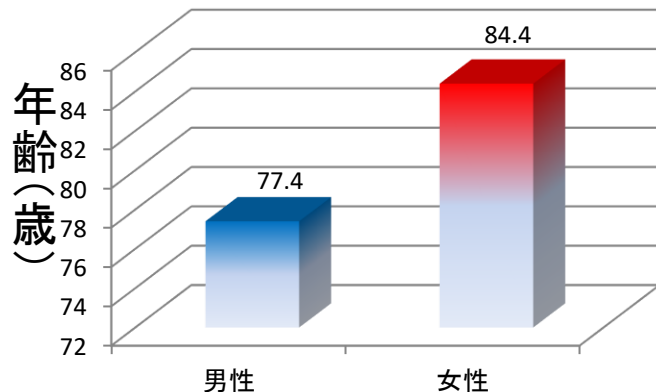


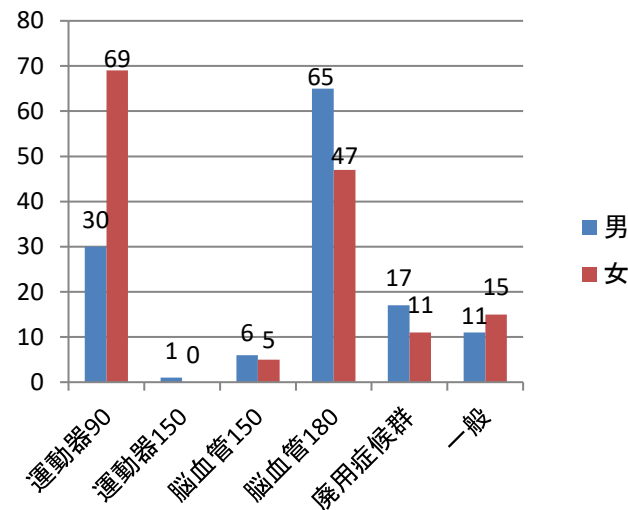
# 2023年度 入院患者 (平均年齢 80.4歳, n=277)



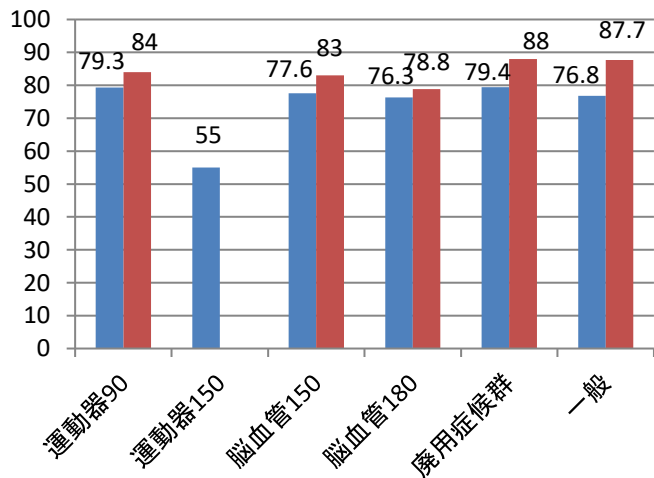
## 男女平均年齢



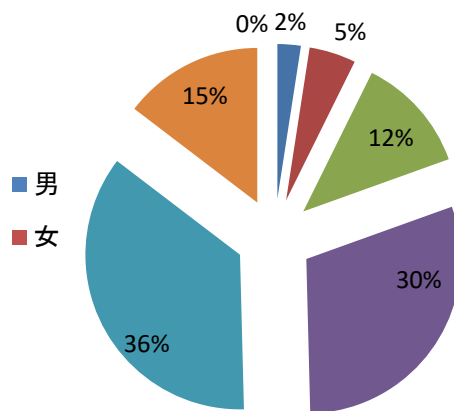
## 疾患別の男女数



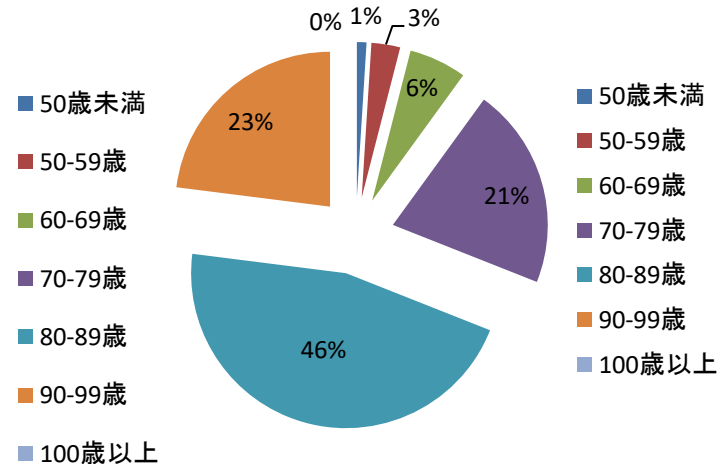
## 疾患男女別平均年齢



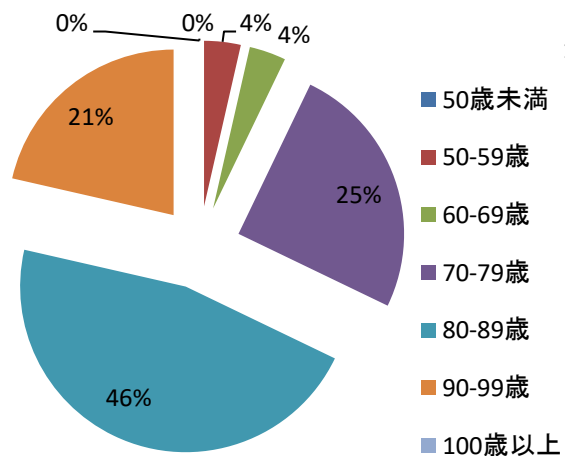
## 脳血管疾患 年齢分布 n123



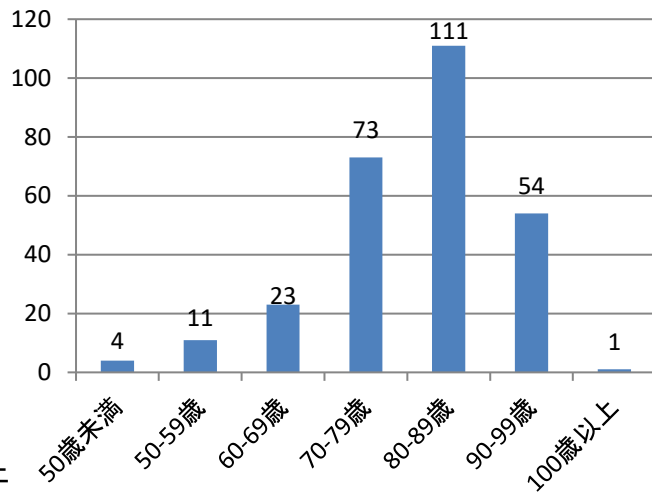
## 運動器疾患 年齢分布 n100



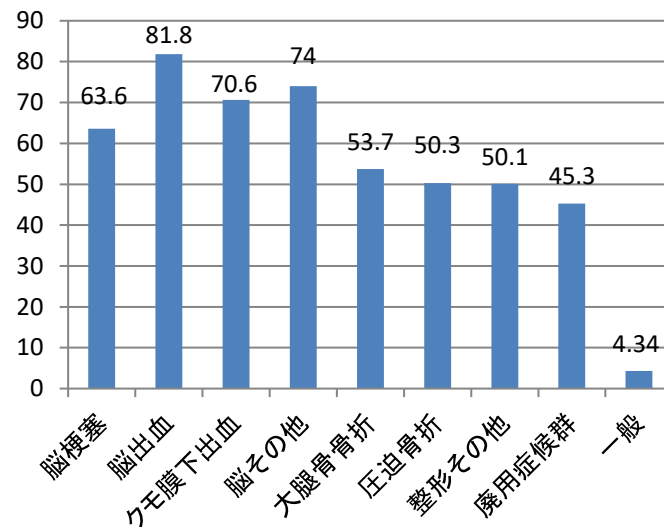
廃用症候群  
年齢分布 n28



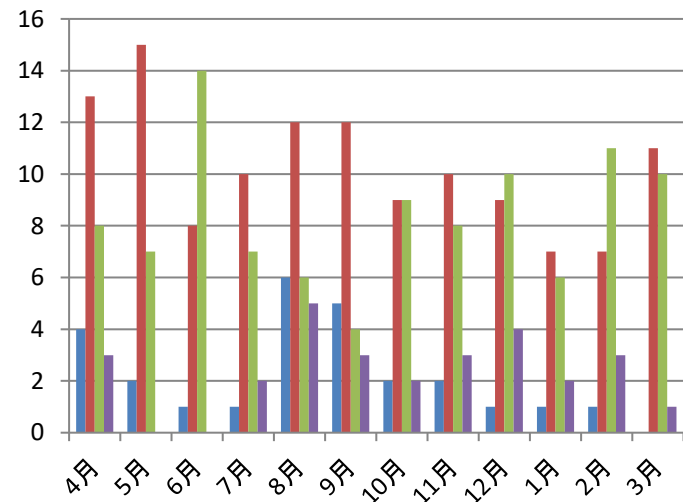
入院患者の年齢分布 n277



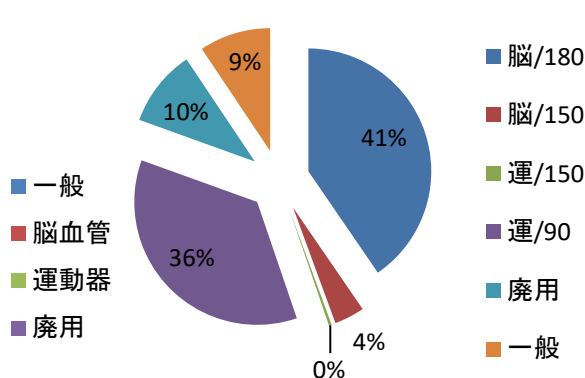
疾患別在院日数



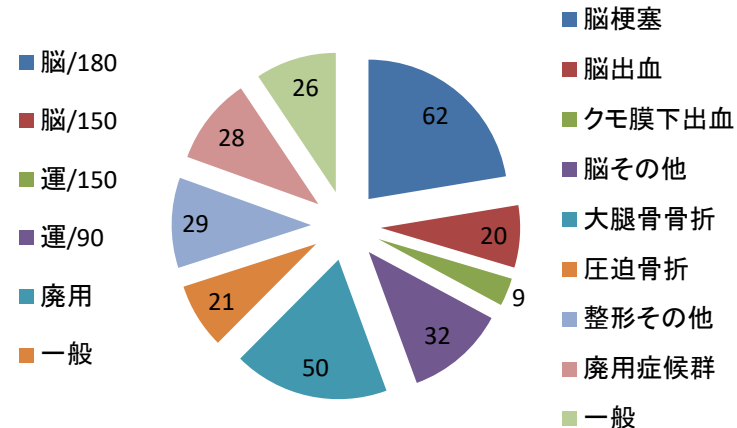
月別入院患者数



入院患者割合

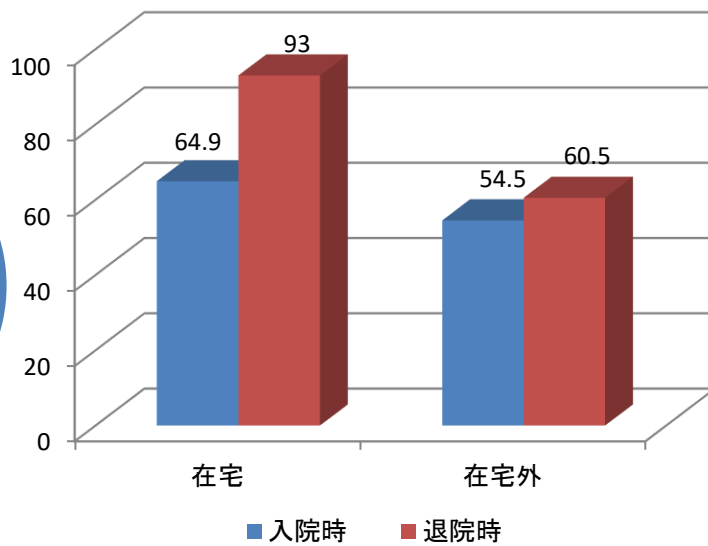
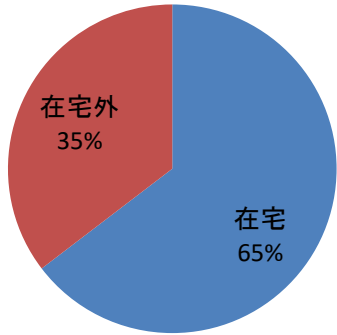


入院患者の基礎疾患

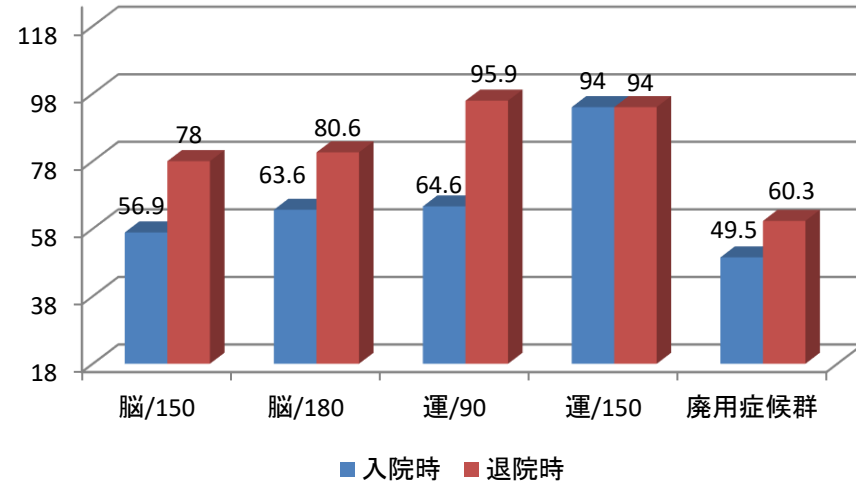


退院先別FIMの変化 n251(回復期対象患者)

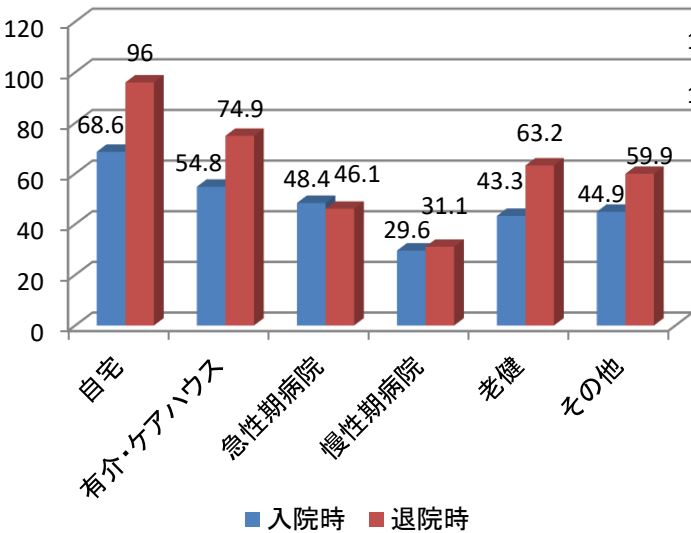
退院先n277



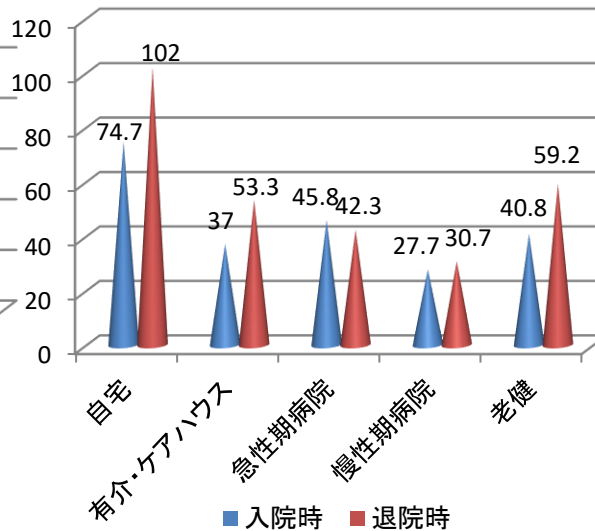
入院時・退院時のFIMの変化 n251(回復期対象患者)



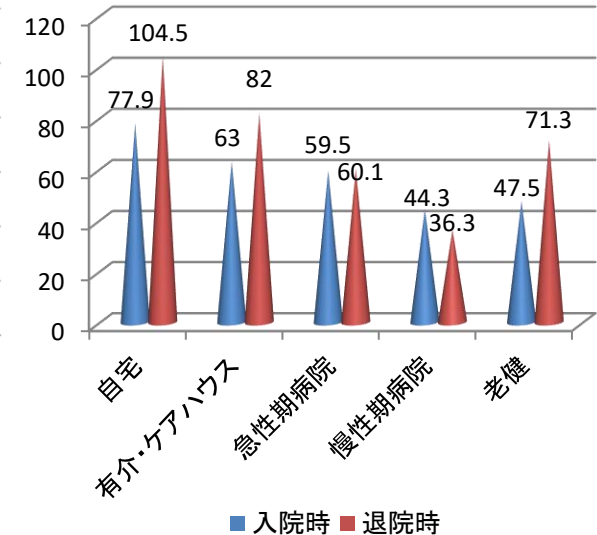
退院先別FIMの変化n251



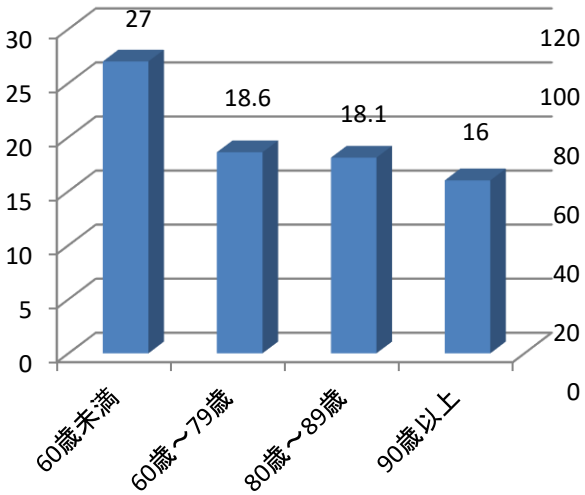
脳疾患における退院先別FIMの変化n123



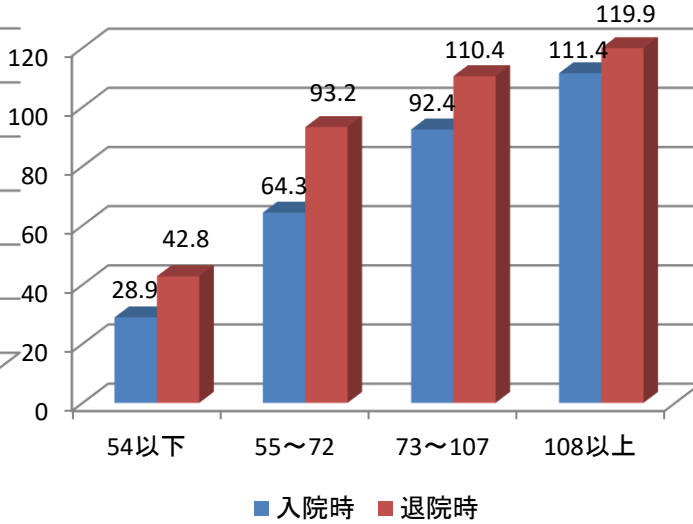
運動器における退院先別FIMの変化n100



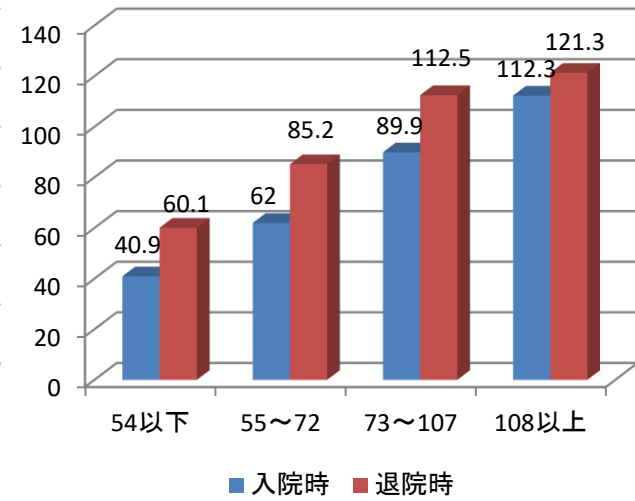
### 年齢とFIMの改善効果 (運動・認知合計)251



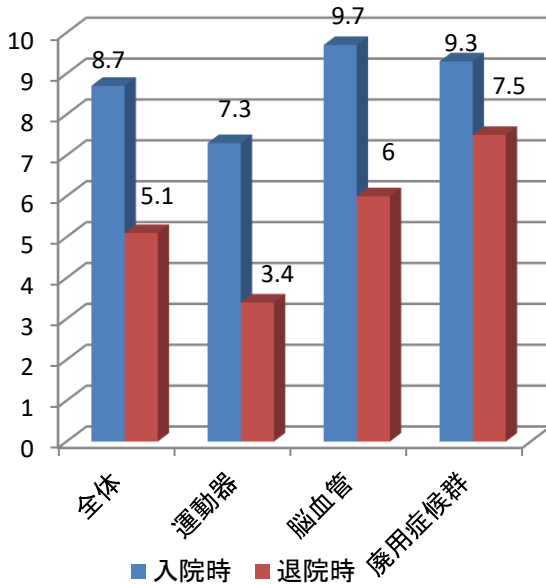
### 入院時FIM別の改善効果 :脳血管



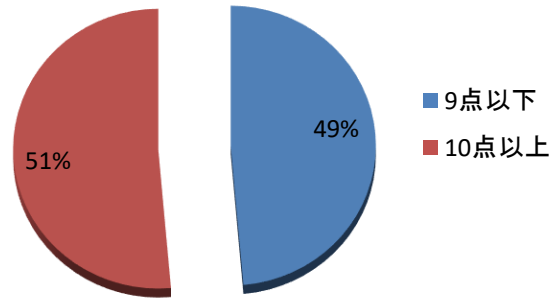
### 入院時FIM別の改善効果 :運動器



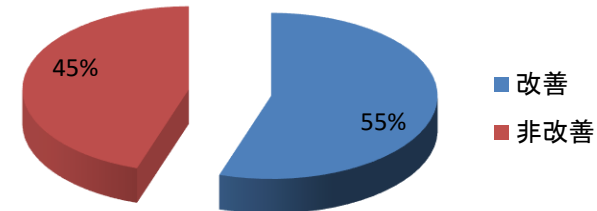
### 疾患別日常生活動作



### 日常生活機能評価重症者割合 10点以上(重症者)



### 重症改善率4点 n129



## 日常生活の変化 入院時/退院時

人数

